

PHILADELPHIA TRAMRAIL **HYDRAULIC BALERS**

FOR DEPENDABLE, COST-SAVING WASTE MANAGEMENT



Since 1907



PHILADELPHIA TRAMRAIL COMPANY

Since 1907



PHILADELPHIA TRAMRAIL



Strength, Safety, and Performance

Concealed proximity safety switch prevents automatic operation unless the gate is fully closed, and reduces operator influence.

Heavy duty cylinder with specially designed seals for quiet performance and long life.

High-efficiency TEFC motor combined with a shockless valve and a high pressure gear pump for quiet, efficient operation.

Enclosed roller chains and sprockets with oilite bearings provide positive tracking for easier gate operation.

Ram guides prevent platen from cocking when the chamber is unevenly loaded.

Recessed electrical controls with protected pushbuttons.

Safety switch prevents automatic baler operation unless the door is fully closed and locked.

Heavy-duty wheel lock for operator safety and gradual release of door pressure.

Front and rear retainer dog system.

Splined connections on shafts and couplings for longer life, more durability, and easier maintenance.

Semi-automatic bale ejector with automatic ejector release.



Patented front geared wheel lock is standard on several models.

MODEL 3400 HD

The safety of the user is of primary importance in the design of Philadelphia Tramrail Hydraulic Balers.

A heavy-duty proximity switch at a high, partially concealed location reduces the risk of misuse or open-gate operation. The switch senses that the counterweight inside the gate supports is raised when the gate is lowered, and allows automatic operation.



THE EMPHASIS IS ON SAFETY

Front or side wheel locks release the pressure slowly before the door is opened for the safety of the operator.

Manual safety gate must be closed and locked before the baler can be operated. If the gate is raised during operation, the platen will stop.

Protected pushbuttons reduce the possibility of damage by forklift.



Safety signs advise the operator on proper use, and caution against unsafe practices.

The Platen has been engineered to eliminate all stress on the connection pin between the cylinder and the platen, reducing the possibility of failure and resulting injury.

Heavy-duty construction, extra-heavy welding, plant testing, and rigid QC inspection provide unsurpassed quality, strength, and durability.

HYDRAULIC BALERS . . . Engineered for su

The Best Baler in the Business

Philadelphia Tramrail is a recognized source of high-quality products manufactured for safety and long life. In 1980, we introduced the first 60" downstroke, high-density baler capable of producing bales of over 1,000 lbs. Our current line of Hydraulic Balers represents years of developmental design, testing, and quality control.

When you order a Philadelphia Tramrail Baler for your waste control department, the benefits of our experience will be immediately apparent. Many advanced design features combine to make operation easy without sacrificing safety. Our balers can handle your toughest requirements with routine efficiency at a low maintenance cost for many, many years.

Standard Features:

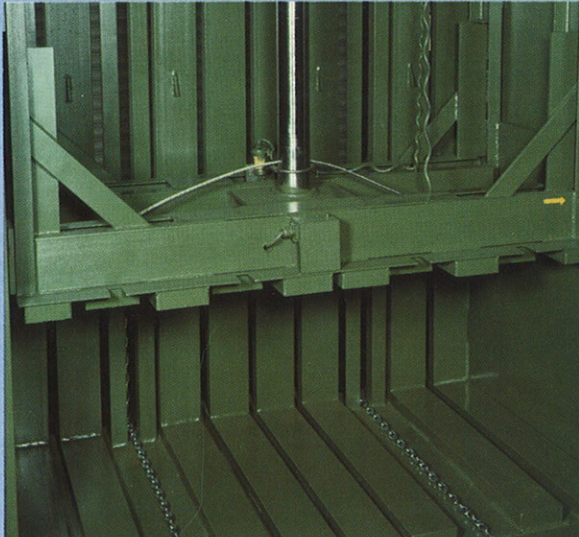
Key-operated ON/OFF switch
Soft shift shockless hydraulic system
Safety interlocks on baler door & safety gate
Motor overload protection
Factory wired for easy installation
Factory testing and engineering inspection
Full year warranty on defective parts & replacement labor
Comprehensive maintenance and safety manual.
Installation hardware and accessories.

Optional Extras:

- Disconnect Switch in the Electrical Control Panel
- Automatic Bale Sizer with Full Bale Light
- UL Listed Electrical Controls
- Outdoor Protective Finish
- Outdoor Rain Shields for Power Pack & Electrical Controls
- Oil Heater for Outdoor Service
- Leaf Type Ejection Chain with Double Chain Pins
- Wall Brackets for Bale Tie Storage
- 550 VOLT Motor
- Side Mounted Power Pack

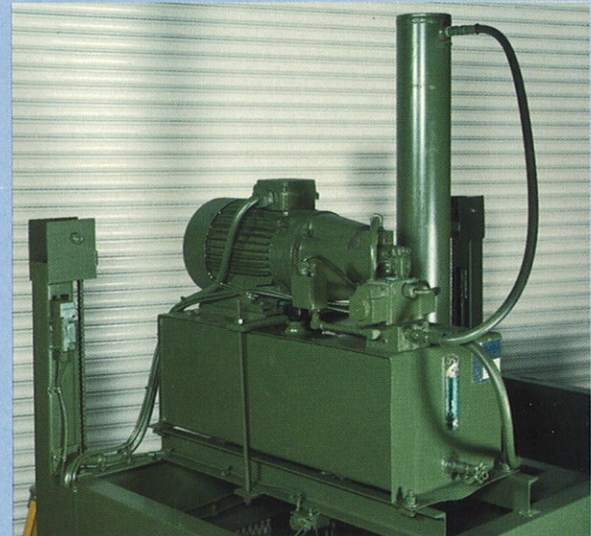
DESIGN FEATURES

The platen is the most critical area of design and construction in a high-density baler. Philadelphia Tramrail Balers feature platens of very heavy structural steel design, engineered to eliminate all stress on the connection pin between the cylinder and the platen during compression. This minimizes the possibility of a pin failure and an operator injury.



In our high density models, stress is reduced by replaceable wear pads and the close-tolerance fit of the platen inside the baler chamber. This protects the structure, platen, and cylinder from the effects of stress and allows longer, low-maintenance performance.

Energy savings are realized by the unique combination of our hydraulic system, high-torque motor, and other design factors which use half the power of other high-density balers. This increase in efficiency will result in tremendous savings, year after year.

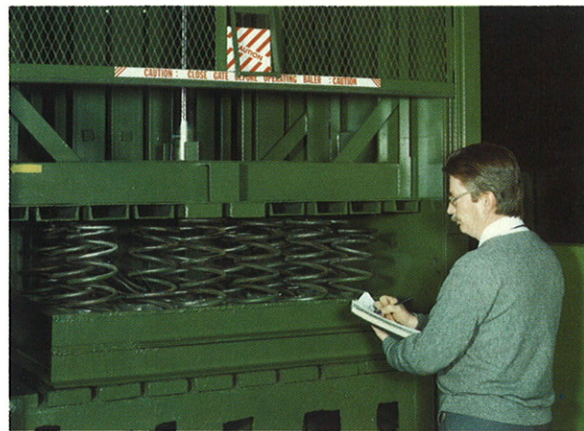


The cylinder is a key component in good baler performance. The engineered combination of seals, piston, and gland provide superior bearing quality in our cylinders. They are designed to compensate for side loads and are furnished with a thick steel cap to eliminate flexing under pressure. These features combine to provide many years of quiet, efficient performance.

Superior durability and maximum safety.

RUGGED CONSTRUCTION

High quality welding is an important contributor to long baler life. Philadelphia Tramrail has worked closely with the Lincoln Electric Co., the nation's leading welding experts, to develop balers with the highest quality and strength in the welds. Baler frames and components are positioned to ensure maximum penetration. Certified welders follow a special process to weld the critical inner core of the platen.



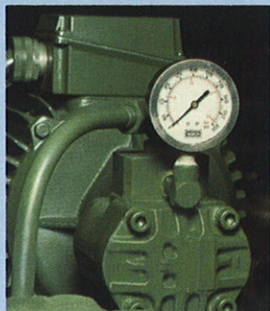
Every baler is thoroughly **factory tested** to ensure that the safety equipment, cylinder, door lock, gate, power pack, and frame meet Philadelphia Tramrail's high quality standards.

After testing, each unit is inspected by a member of our engineering department to verify performance and appearance. At Philadelphia Tramrail, we take every step necessary to ensure delivery of the finest balers possible.

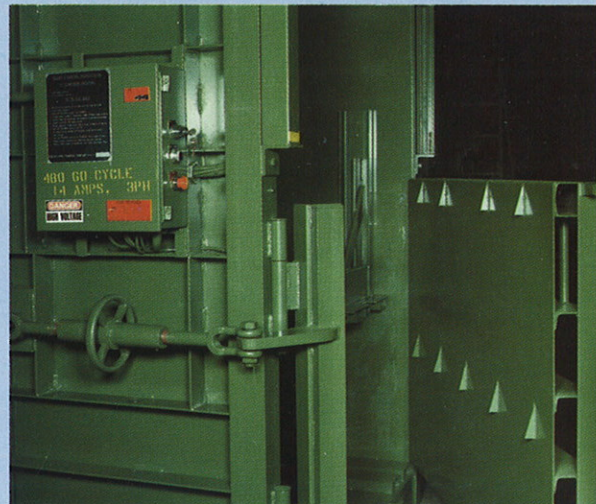
The safety gate operates with a minimum of operator effort, due to the enclosed roller chain mounted on sprockets with oilite bearings. Our concealed safety switch prevents operation in the automatic mode unless the gate is fully closed.



A pressure gauge is mounted prominently on the baler, allowing the operator to check periodically to ensure proper operating pressure. If necessary, the pressure can be adjusted.



A dual set of retainer dogs prevents corrugated material from bouncing back up into the loading chamber. Spring loaded, retractable dogs at the upper level of the door are standard on our rugged Model 5000. The side wheel lock gradually releases the pressure for the operator's safety, preventing the door from opening suddenly. The protected position of the electrical controls minimizes the risk of damage.



A metal plate, detailing the **operator instructions** on the proper use of the baler and the wiring and ejection of the bale, is fastened onto every control box with tamper-proof screws. In accordance with ANSI standards, the control box is labeled with the proper warnings and a keyed on/off switch.

A model for every baling requirement:

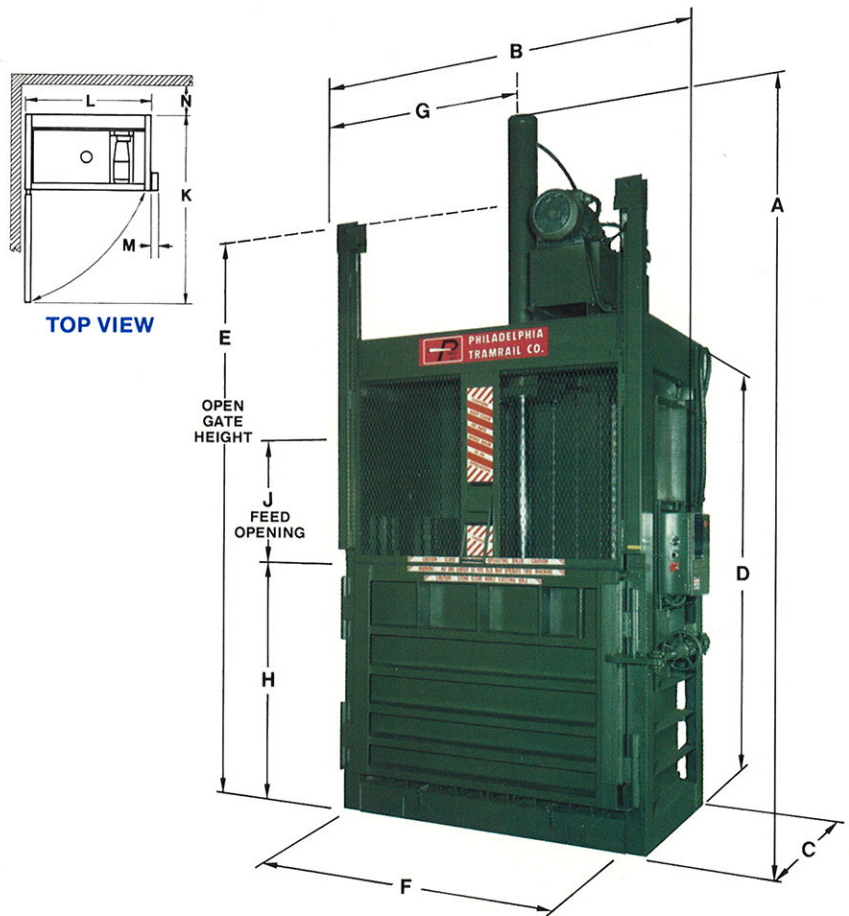
Philadelphia Tramrail offers several baler models in order to provide efficient waste management for a variety of applications. Each is manufactured for strength, safety, and reliable performance.

MODELS 1800 & 3700 HD: These low profile balers are ideal for applications with low headroom or limited space.

MODELS 2700 & 3400: Standard density balers constructed with heavy structural components for heavy duty applications including corrugated material.

MODELS 3400 HD & 4000 HD: High density balers producing 1,000 to 1,200 lb. bales of corrugated material, these models are ideal for supermarkets, chain stores, department stores, drug stores, and other commercial applications. These denser, heavier bales reduce the cost of storage space, handling, and transportation while maximizing recycling revenue.

MODEL 5000: This extremely rugged, high density baler is constructed of larger structural steel components combined with a larger cylinder and motor for reliable performance in heavy-duty industrial applications.



Model	1800	2700	3400	3400 HD	3700 HD Low Profile	4000 HD	360	
Dimension	A	11' 3"	11' 8"	12' 6"	12' 6"	10' 6"	12' 6"	95½"
	B	5' 3½"	6' 4"	6' 4"	6' 4"	6' 4"	6' 4"	41"
	C	3' 10"	3' 10"	3' 10"	3' 10"	3' 10"	3' 10"	30"
	D	7' 4"	8' 7"	8' 7"	8' 7"	7' 4¾"	8' 7"	63"
	E	8' 10"	10' 7½"	10' 7½"	10' 7½"	8' 6"	10' 7½"	79"
	F	4' 1"	5' 2"	5' 2"	5' 2"	5' 2"	5' 2"	36"
	G	2' 10½"	3' 5"	3' 5"	3' 5"	3' 5"	3' 5"	20½"
	H	3' 8½"	4' 5½"	4' 5½"	4' 5½"	3' 0"	4' 5½"	33"
	J	2' 1"	2' ¾"	2' ¾"	2' ¾"	2' 0"	2' ¾"	18"
	Clearances	K	7' 9"	9' 0½"	9' 0½"	9' 0½"	9' 0½"	9' 0½"
L		4' 8"	5' 9¾"	5' 9¾"	5' 9¾"	5' 9¾"	5' 9¾"	45"
M		0' 7"	0' 7"	0' 7"	0' 7"	0' 7"	0' 7"	0' 7"
N		1' 6"	1' 6"	1' 6"	1' 6"	1' 6"	1' 6"	18"
Bale Size	Width (in.)	48	60	60	60	60	60	36
	Depth (in.)	30	30	30	30	30	30	24
	Height (in.)	36	48	48	48	34	48	30
	Bale Weight (lbs.)	400 to 600	600 to 800	600 to 900	1000 to 1200	600 to 800	1000 to 1200	100 to 250
	Cylinder (in.)	5 X 38	5 X 38	5 X 48	6 X 48	6 X 38	6 X 48	3 x 32
	Pump (GPM)	11.6	11.6	11.6	11.6	11.6	15.1	4
	Wheel Lock	Side	Front	Side	Side	Side	Front	Side
	Motor HP	10	10	10	10 H.T.	10 H.T.	15	3
	System Press. (psi)	1700	1700	1700	2400	2400	2400	1600
	Max. Platen Press. (psi)	49,088	49,088	49,088	84,822	84,822	84,822	14,140
	Cycle Time (sec.)	29	29	32	50	40	39	30
	Control Volt. (V)	110	110	110	110	110	110	110
	Bale Ties	4(14 ga., 13')	4(14 ga., 14')	4(14 ga., 14')	5(14 ga., 15')	5(14 ga., 13')	5(14 ga., 15')	2(14ga., 10')
Electrical	208 — 230/440 — 480 Volt, 3 Phase, NEMA 12						220V/1phase	
Finish	Semi Gloss Machinery Green							

Our complete service begins the moment we receive your order.

Our installation coordinators verify your delivery requirements. They can arrange delivery and/or installation to coincide with your fixturing, electrical connection, parking lot paving, and other extraordinary conditions. At the time of our installation, your personnel will be instructed on the safety procedures and operation of your baler.

Our Service Department is ready to assist you on preventive maintenance and safety checks as well as any other service needs after the installation.

With fifteen stocked service trucks manned with factory-trained technicians, we are well equipped to respond to your service needs either internally or in coordination with our Designated Service Centers throughout the U.S.A. These Centers work closely with our Service Managers to see that your needs are met 24 hours a day, 365 days a year.



A tradition of excellence since 1907

Philadelphia Tramrail Company has earned a reputation for reliable products and thorough service that dates back to 1907. Our experienced staff upholds this tradition by continuing to introduce new concepts to our markets, in order to help our customers improve production and minimize costs.

We are committed to providing our customers with the best balers in our industry at a competitive price. Our engineers, service technicians, production and sales personnel combine their experience and efforts to continue improving safety, performance, and service.

Choose Philadelphia Tramrail for your baler requirements — where performance excellence has been proven thousands of times. For more information or a quotation, contact us today.



Since 1907



PHILADELPHIA TRAMRAIL COMPANY

22
C
FA



National Solid Wastes
Management Association



Waste Equipment
Manufacturers Institute

Philadelphia Tramrail Company reserves the right under its Product Improvement Program to modify construction and/or design details and furnish equipment so altered without reference to illustrations and/or specifications shown herein.